



PRODUCT LINE

- **ENVIRO BOXES – TRUCK OUT BOX ASSEMBLIES**
 - **TANK VENTS – PVRVS**
- **FLAME & DETONATION ARRESTORS**
 - **PIG TRAP BOXES**

TRUCK OUT, ENVIRO-BOX, AND LOAD LINE BOXES

CLIP GATE VALVE BOXES



SINGLE LINE ENVIRO-BOX

Standard Models, Single Box Models

- 2", 3", & 4" Threaded EnViro-Box Assemblies
- 2", 3", & 4" Welded / Flanged EnViro-Box Assemblies
- Ball Valve, Gate Valve, Globe Valves
- Powder Coat Enclosure (14 ga.)
- Ground Lugs, 3/4 " Drain Line, CL 150 Flanges

FREEZE RESISTANT BALL VALVES



Optional & Custom Features

- Radiography of welded piping, 10% or 100%
- MPI of TOLs & Fillet Welds
- Custom valve options upon request: meet all AMLs
- Ground Cables & Clamp
- Retractable Ground Reels
- 1/2" Liquid Sampling Line

RETRO-FIT ENVIRO BOXES



Industry-Leading Ease of Maintenance & Installation

- Removable back plate for installation.
- Removal of box assembly allows box to be slid over valves.
- All Enviro-Boxes come with a 1-year warranty against manufacturing defects.
- Third-party components carry warranties from respective manufacturers.
- Watch our installation and service video on our website

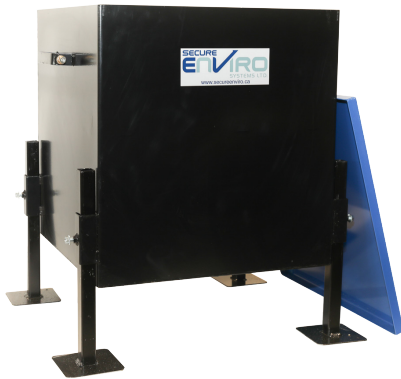
DUAL, TRIPLE & CUSTOM BOXES AVAILABLE

PIG TRAP BOXES



Standard Model - 150 Liters

- 22" x 22" x 22"
- Powder Coat Enclosure (14 ga.)
- Adjustable legs for uneven surfaces



Standard Features

- Easy to clean.
- Removable lid for containment.
- Adjustable legs for uneven surface mounting.
- Comes with a 1-year warranty, against manufacturing defects.
- Third-party components carry warranties from respective manufacturers, where applicable.



Optional & Custom Features

- Custom sizing available
- Custom colors available
- Grounding lugs and cables
- Available in stainless steel or aluminium

PIG TRAP BOX WITH OPTIONAL GROUNDING LUG

TANK PRESSURE AND SAFETY RELEASE VALVES



PRESSURE VACUUM RELIEF VALVES (PVRV)

Models

KSBB
Weight Loaded model
Setting Pressure
Min. +/- 20 mmW.C ~ Max. + 700/- 430 mmW.C

KSBS
Spring Loaded model
Setting Pressure
Min. + 700/- 430 mmW.C ~ Max. +/- 9,000 mmW.C

Features

- Made from trusted materials (Aluminum, Carbon Steel, Stainless Steel 304 and 316)
- Options for different materials available
- Designed and manufactured with the latest technology
- Range of sizes available (2" to 12" CL150 Connections)
(Different connections available on request)



PRESSURE RELIEF VALVES

Models

KSPR
Weight Loaded model
Setting Pressure
Min. 20 mmW.C ~ Max. 700 mmW.C

KSPS
Spring Loaded model
Setting Pressure
Min. 700 mmW.C ~ Max. 9,000 mmW.C

Features

- Made of reliable materials (Aluminum, Carbon Steel, Stainless Steel 304 and 316)
- Options for different materials available on request
- Range of sizes available (2" to 12" CL150 Connections)
- ANSI 150lb flanges come standard
(Different connections available on request)



VACUUM RELIEF VALVES

Models

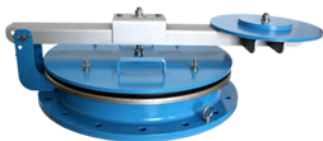
KSVB
Spring Loaded model
Setting Pressure
Min. - 20 mmW.C ~ Max. - 9,000 mmW.C

Features

- Made from reliable materials (Aluminum, Carbon Steel, Stainless Steel 304 and 316 with various trims)
- Options for different materials available on request
- Range of sizes available (2" to 12" CL150 Connections)
(Different connections available on request)

EMERGENCY VENT COVERS

Models KSEPK



Features

- Made with reliable materials (Carbon Steel, Stainless Steel 304 and 316 with various trims)
- Option of different materials available on request
- A range of sizes available
- ANSI 150 lb or API 650 flanges available
- Setting pressure of a minimum 50 mmW.C to a maximum 700 mmW.C

Additional Features

- Steam jacket type
- Steam tracing type
- Proximity type
- Teflon coating/lining type

DISTRIBUTED EXCLUSIVELY IN CANADA BY:

FLAME & DETONATION ARRESTORS, RUPTURE DISCS



FLAME ARRESTORS

Features

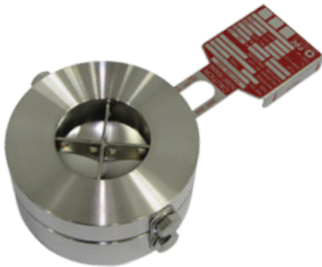
- Made from reliable materials (aluminum, nodular iron, cast steel, SS304, SS 316, SS316L with various trims)
- A range of sizes available to fit your existing equipment (2" to 12", NPT or CL150 Connections)
- ANSI 150lb flanges come standard
- Flame cells: NEC group D or IEC IIA Gases (Other gas groups all available as extras)



DETONATION ARRESTORS

Features

- Made from reliable materials (aluminum, nodular iron, cast steel, SS304, SS 316, SS316L with various trims)
- A range of sizes available to fit your existing equipment (2" to 12", NPT or CL150 Connections)
- ANSI 150lb flanges come standard
- Flame cells: NEC group D or IEC IIA Gases (Other gas groups all available as extras)



RUPTURE DISKS

Features

- Optimized materials and structure (choose from a range of materials)
- Accurate rupture pressure
- Instantaneous release of maximum capacity
- There is almost no limitation in the manufactured size
- There is a wide environment scope for use (strong corrosive nature, high temperature, low temperature, liquid, gas, steam, dust, powder, polymer, etc.)
- Complete tight seal

DISTRIBUTED EXCLUSIVELY IN CANADA BY: